

JEFFERSON
PARISH

**Red
White
& Blue**
SENIOR EXPO



MARCH 20, 2025



Pontchartrain Center | Kenner, Louisiana



LOUISIANA **BLUE**



JEFFERSON
COMMUNITY
FOUNDATION



Jefferson
Parish
State of Louisiana

Celebrating 22 Years!

We are proud to help support the senior community in Jefferson Parish, and to provide seniors with information and access to much-needed organizations and businesses.

We are successfully marketing the event through various media platforms. We're partnering with transportation services, non-profits, and local centers whose programs and events dovetail well with ours. Beyond word of mouth, we will maintain a broad campaign of online and traditional methods of TV, Radio, Print, and Social Media advertisements to ensure there is a distinct buzz about the show. It is our passion to host the largest party for our senior population on Thursday, March 20, 2025.

**Please join us in this spectacular event.
We hope to see you there!**



Please join us at the 22nd Annual Jefferson Parish Senior Exposition

Thursday, March 20, 2025 | 8:30a.m. to 1:00 p.m.

Pontchartrain Center | 4545 Williams Boulevard | Kenner, LA

The Exhibit will be open from 8:30 a.m. and will close at 11:30 a.m.

Lunch will be from 11:30 a.m. until 1:00.p.m.

FUN!
ENTERTAINMENT!

*Best decorated
booth contest!*

**Costume
Competitions**
1st, 2nd, & 3rd
CASH PRIZES

Music by the
one & only
DJ Rockin Ron

The purpose of the Exposition is to provide vital, informative, health and welfare initiatives for Jefferson Parish senior residents with the goal of increasing longevity, and improving quality of life.

For a festive atmosphere, the Jefferson Parish 2025 Senior Exposition will be themed Red, White & Blue in honor of Jefferson Parish's Bicentennial in 2025. Exhibitors are invited to decorate their booths accordingly. Our Expo continues to grow each year and serves over 2,000 participants.

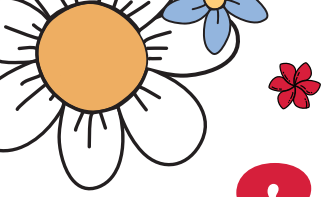
Booth space will be issued on a first-come, first-serve basis. Space is limited so we encourage early return of the enclosed Senior Expo application. Sponsorships at the levels of Gold, Silver, Bronze, and costume are available.

Booth set-up at the Pontchartrain Center will be from 11:00 a.m. to 4:00 p.m. on Wednesday, March 19, 2025 only. Please note that set-up is prohibited the day of the event.

Additional booth information is provided on the application. For inquiries regarding applications or sponsorship, please contact: Christine Briede 504-264-1237



JEFFERSON
COMMUNITY
FOUNDATION



Sponsorship Opportunities

Presenting Sponsor • Stage Sponsor\$10,000

- Premium booth space location
- Company will receive an 8-table booth, each booth with 6' long table and 2 chairs
- Company logo will be recognized as Platinum Sponsor on the event banner prominently displayed on stage
- Platinum sponsor included in welcome program
- Company's own signage/banners will be placed at registration table and stage
- Speaking opportunity to address the Expo attendees from the stage
- Company logo will be featured on event program and posters distributed within the community

Gold Sponsor\$6,000

- Receive a 6-table booth, each booth with 6' long table and 2 chairs
- Your Signage/banner will be prominently displayed at the beginning and end of your row at the event
- Logo will be recognized as Gold Sponsor on the event banner prominently displayed on stage
- Logo will be featured on event program and posters distributed within the community

Silver Sponsor\$4,000

- Receive a 4-table booth, each booth with 6' long table and 2 chairs
- Your Signage/banner will be prominently displayed at the beginning and end of your row at the event
- Logo will be recognized as Silver Sponsor on the banner prominently displayed on stage
- Logo will be featured on event program and posters distributed within the community

Costume Competition Sponsor\$3,000

- Receive a 2-table booth, each booth with 6' long table and 2 chairs
- Logo will be recognized as Costume Sponsor on the banner prominently displayed on stage
- Logo will be featured on event program and posters distributed within the community

Bronze Sponsor\$2,000

- Receive a 2-table booth, each booth with 6' long table and 2 chairs
- Logo will be recognized as Bronze Sponsor on the banner prominently displayed on stage
- Logo will be featured on event program and posters distributed within the community



FOR EXPO USE ONLY

BOOTH ASSIGNED _____

PAYMENT AMOUNT _____ DATE PAYMENT RECEIVED _____

RECEIVED BY _____ DATE OF DEPOSIT _____

COMPANY NAME _____

ADDRESS _____

CITY _____ STATE _____ ZIP _____

PHONE _____ FAX _____

CONTACT NAME _____ EMAIL ADDRESS _____

Sponsorship	Booths	Early Bird (Before Feb 14)	After Feb 15
<input type="radio"/> Presenting Sponsor\$10,000	<input type="radio"/> Non-Profit \$150		\$200
<input type="radio"/> Gold Sponsor\$6,000	<input type="radio"/> One Expo Booth \$500		\$750
<input type="radio"/> Silver Sponsor\$4,000	<input type="radio"/> Additional Booth \$250.....		\$375
<input type="radio"/> Costume Sponsor\$3,000	<input type="radio"/> 110 Volts, 20 Amps Outlet..... \$75		\$99
<input type="radio"/> Bronze Sponsor\$2,000	<input type="radio"/> 110 Volts, 30 Amps Outlet \$75		\$99
	<input type="radio"/> Additional Chair..... \$5		\$7.50

A booth consists of a draped 8'x10' area with one 6' table, 2 chairs and a waste paper basket. Staples are prohibited on drapes. **PLEASE NOTE:** No selling, order taking, or money raffling will be allowed during the expo. **SET UP:** is Wednesday, March 19, 2025 from 11am to 4pm only, and is prohibited on the day of the event. I fully understand the JP Senior Expo is not for the collection of information or solicitation.

AUTHORIZED SIGNATURE _____ DATE _____

Mail application & payment to: Christine Briede | Jefferson Community Foundation
 3908 Veterans Blvd., Suite A | Metairie, LA 70002
 504-264-1237 | christine@jeffersoncommunity.org



Pay Online: jeffersoncommunity.org/donate and select Support JP Senior Expo