

Jefferson Community Foundation



Annual Impact Report

STRENGTHENING
COMMUNITY THROUGH
PHILANTHROPY

2023



JEFFERSON
COMMUNITY
FOUNDATION



Welcome Annual Impact Report 2023

The Jefferson Community Foundation is deeply committed to improving the lives of individuals within our community. Through our dedication and tireless efforts, we continually strive to make meaningful contributions that uplift and empower those we serve. As we reflect on our past endeavors and accomplishments, we are filled with pride and eager to share the significant impact we have achieved together. We eagerly anticipate the opportunity to present our vision for the future and unveil the inspiring projects that will further enrich the lives of our community. With a steadfast focus on collaboration, transparency, and inclusivity, we remain dedicated in our mission to foster growth and cultivate a thriving environment where every individual has the opportunity to succeed.

Annual Impact Report Contents

04

A Letter from the Chairman

05

About JCF

06-07

Race Equity

08-09

Quality of Life Survey

10-11

Senior Expo

12-13

Jefferson Ready Start Network

14-15

iPhone Basics for Boomers

16-17

Jefferson Community Youth Leadership

18-19

Cafe Hope

20-21

Hurricane Ida

for more information visit us at
www.jeffersoncommunity.org



to enhancing
n unwavering
ke meaningful
we reflect on
th excitement
Moreover, we
the future and
fabric of our
novation, and
positive change
can flourish.

JCF

Message From Our Chairman



Jim Garvey
Chairman

I was introduced to the Jefferson Community Foundation (JCF) when a friend asked me to join the board, which I gladly did due to my belief in JCF's dedication to improving the quality of life in Jefferson Parish. Serving on the board has been fulfilling, as it's a hardworking group actively involved in crucial community work. Our dedicated staff is also active in the community connecting organizations and individuals to the resources they need.

I'm particularly fond of our work advancing early care and education, the Jefferson NOW Quality-of-Life survey, Hurricane Ida recovery efforts, and the Jefferson Community Youth Leadership program. Future endeavors include plans for an Aquatics Center, Community Arts Center feasibility study, and the Mike Miley Cooling and Charging Center to aid Jefferson Parish residents after a disaster.

We will continue to make moves collaboratively with community engagement in mind. JCF's optimism and constructive approach unite us in tackling challenges.

Your support, whether through donations, sponsorships, or membership renewal, is invaluable in diversifying funding to enhance our role as your premiere community partner.

Thank you for being an important part of JCF's mission.

A handwritten signature in black ink that reads "Jim".

James Garvey

Board Chairman

Jefferson Community Foundation

Powered By The Community For The Community

Jefferson Community Foundation (JCF) is the nonprofit, community foundation for Jefferson Parish dedicated to improving the quality of life for residents, visitors and businesses in Jefferson Parish by focusing on the needs of the community and power of philanthropy.

JCF's primary focus areas encompass education, health and wellness, neighborhood support and revitalization, race equity, senior initiatives, and transit.



Contributions are utilized to bolster initiatives or endeavors aimed at effecting positive change and addressing the community's unmet needs that aren't fulfilled by either businesses or governmental entities.

Race and Equity

Jefferson Parish is a diverse and vibrant community with a rich mix of cultures, backgrounds, and perspectives. To celebrate this diversity and promote unity, we created a campaign that highlights the many different people and cultures that call our parish home.



Jefferson Community Foundation is pleased to announce our latest endeavor: strategically placed billboards throughout Jefferson Parish, each meticulously crafted to highlight the diverse essence of our community.

Featuring infants of various nationalities, these billboards serve as poignant symbols of our shared humanity and the inherent beauty found in our differences. As we gaze upon these images, we are reminded to embrace our individuality, to take pride in our origins, and to cherish the rich tapestry of cultures that define us.

Through this campaign, we aim to foster a sense of unity, inclusivity, and mutual respect among all residents of Jefferson Parish.

Objectives



Increase awareness and understanding of the diverse communities in our parish



Enhance the parish's reputation as a welcoming and inclusive place to live and visit



Promote unity and inclusion

Jefferson Parish Is Changing!

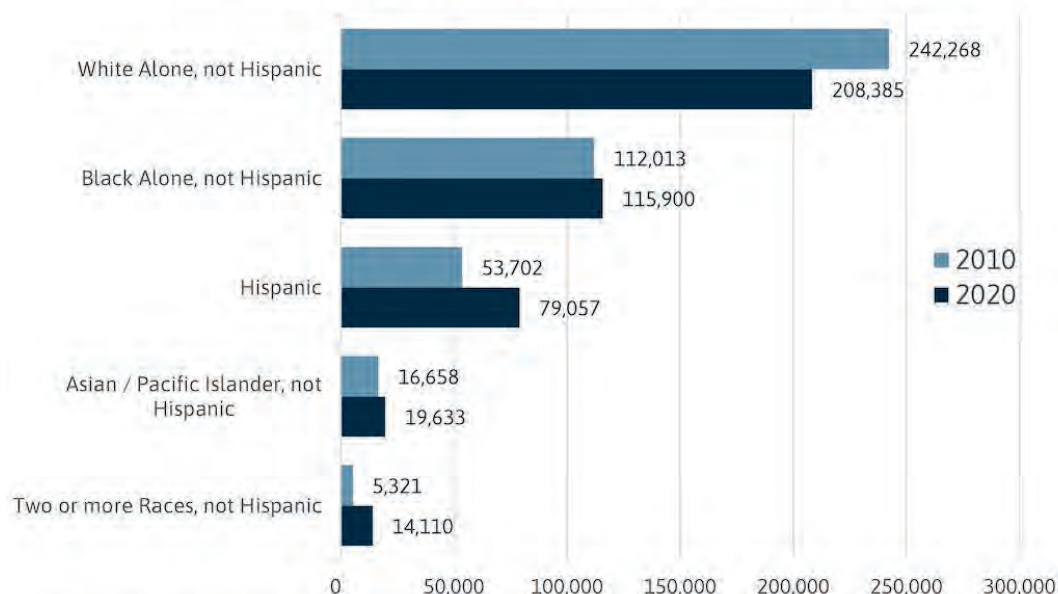


www.jeffersoncommunity.org

Celebrating Jefferson's Diversity

Jefferson Parish Demographics

Population Race and Ethnicity, 2010 - 2020: Jefferson Parish



Source: The Data Center analysis of data from the U.S. Census Bureau: 2010 - 2020 Decennial Census

* Note: Only the largest demographic groups are represented.

Quality of Life Survey

Jefferson Parish residents' feedback is pivotal for shaping its future. JEFFERSON NOW tracks quality of life to guide leaders, with a recent survey providing key insights. The sponsoring organizations pledge to address challenges in collaboration with officials and civic groups.

A partnership of the Jefferson Business Council, Jefferson Community Foundation, Jefferson Chamber of Commerce, and JEDCO.

Visit our website for survey details.



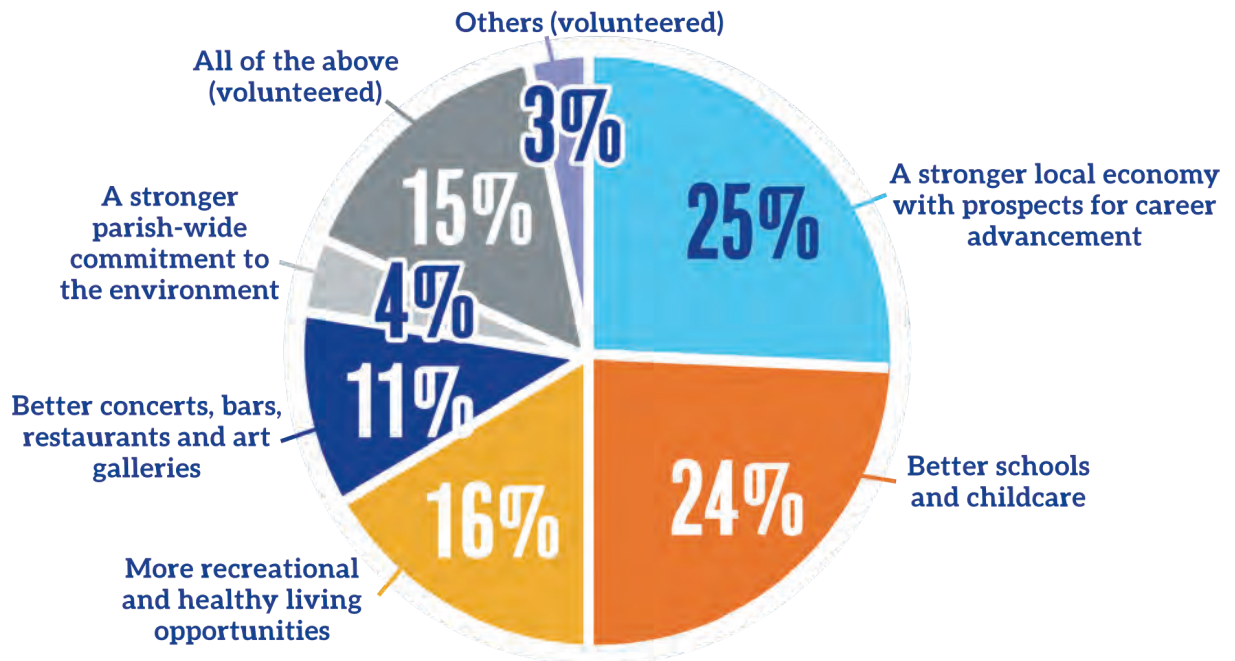
Jefferson NOW

JEFFERSON NOW is dedicated to facilitating the realization of a collective vision by providing invaluable data for our political, civic, and business leaders to navigate the landscape of Jefferson Parish. Through a recent comprehensive survey, JEFFERSON NOW offers objective insights into the Parish's commendable strengths and the pertinent challenges it faces. The sponsoring organizations envision this inaugural Quality of Life Survey

as a foundational benchmark against which future assessments can be compared, facilitating a systematic evaluation of our progress on issues paramount to residents. Collaboratively, the sponsoring organizations pledge to engage with elected officials and civic groups in strategizing effective solutions to enhance our quality of life. Please visit our website for a booklet providing additional detailed information of this report.

ATTRACTING YOUNGER RESIDENTS FOR A VIABLE FUTURE

Respondents aged 18 to 44 weighed in on what improvements would **attract more young people** to Jefferson Parish. A **stronger local economy** and **better schools and childcare** ranked highest, followed by more recreational and healthy living opportunities.



SURVEY FUTURE TRENDS

Residents gave high ratings to overall quality of life, neighborhoods, a good place to retire, a good place to raise a family, the economy, and many government services, showcasing a strong foundation for the decades ahead.

Areas or services that public agencies receive high approval ratings

- Garbage pick-up and disposal
- Levee and flood protection
- Public safety and crime control
- Drainage
- Parks, playgrounds, and recreational facilities
- Local healthcare

While **68%** of residents expect to stay in the Parish over the next five years, **26%** may not, and another **5%** are unsure. The survey shows that the lower the age, the higher the possibility of leaving the Parish. There are other areas listed below that may warrant attention.

Areas of concern that may warrant attention

- Traffic congestion
- Walking paths and bike trails
- Enforcement of building codes, Planning for future growth
- Homelessness
- Railroad tracks that slow down traffic
- Attracting new jobs and businesses
- Quality of Public Schools, Childcare and early childhood education
- Affordable housing
- Juvenile services

Senior Expo

The 20th annual Senior Expo, themed "Cruising Into Summer," convened at the Alario Center on June 22, 2023.

This milestone event provided Jefferson Parish seniors with essential information and services from dedicated companies. Attendees enjoyed a costume contest, performances, and a communal lunch. The Expo's focus on health, welfare, and community engagement underscored its significance. Booths competed for recognition, with the winner earning a free booth for the following year. In essence, the Senior Expo epitomized a professional commitment to supporting seniors in Jefferson Parish.



JEFFERSON PARISH SENIOR EXPO

Cruising into



JEFFERSON
COMMUNITY
FOUNDATION



Platinum Sponsor

PEOPLES HEALTH



RISH
OP
DO

JUNE
22
2023
ALARIO CENTER

Summer 2023



Jefferson Ready Start Network

Jefferson Parish is home to 33,347 children birth to 5. These infants and toddlers are the future of our parish, and their experiences in the first 5 years of life will impact the citizens they become.

Investing in the care and education of young children is the “most efficient use” of public resources.
— Nobel Laureate and Economist James Heckman

What does early education look like in Jefferson Parish?

The cost of early care and education (ECE) puts quality programs out of reach for many families. There is a **critical need for affordable, quality ECE** in Jefferson Parish:

- An estimated **21,000-25,000 children birth to 5** are economically disadvantaged (100-200% FPL)
- Only **4,332** of those children **are enrolled in publicly funded seats**.

This means: **Less than 20%** of eligible infants and toddlers **have access** to quality early childhood education in Jefferson Parish.



As a result: Only **12.4%** of Jefferson Parish children enter kindergarten **ready to learn**.



The Jefferson Ready Start Network (JRSN) is a coalition dedicated to enhancing early childhood education for children from birth to age five in our parish. Led by the Jefferson Parish School District, JRSN unites community leaders and stakeholders to improve the quality and accessibility of early learning opportunities.

Driven by local data and community needs, JRSN develops strategic plans, secures resources, and implements innovative solutions. Our mission is to create impactful opportunities that lay the foundation for lifelong success. Join us in making a difference in the lives of our youngest residents.

Jefferson Community Foundation serves as a fiscal sponsor for JRSN.



Brain development
90%
of brain development occurs before age 5



Higher graduation rates
Students who received high-quality ECE were more likely to graduate high school.
4x



Better health outcomes
Most chronic diseases have their roots in early childhood.

Lower involvement in crime
A study showed that children who **did not** participate in a preschool program were more likely to be arrested for a violent crime by 18.
70%

Jefferson Ready Start Network is a coalition committed to creating and implementing a bold local vision for early childhood driven by the needs of our community to improve opportunities and inspire change for children birth to age 5 in Jefferson Parish.

GOAL 1

Create and share data about early childhood supply, demand and outcomes



GOAL 2

Diversify and increase funding for early childhood education and experiences in Jefferson Parish.



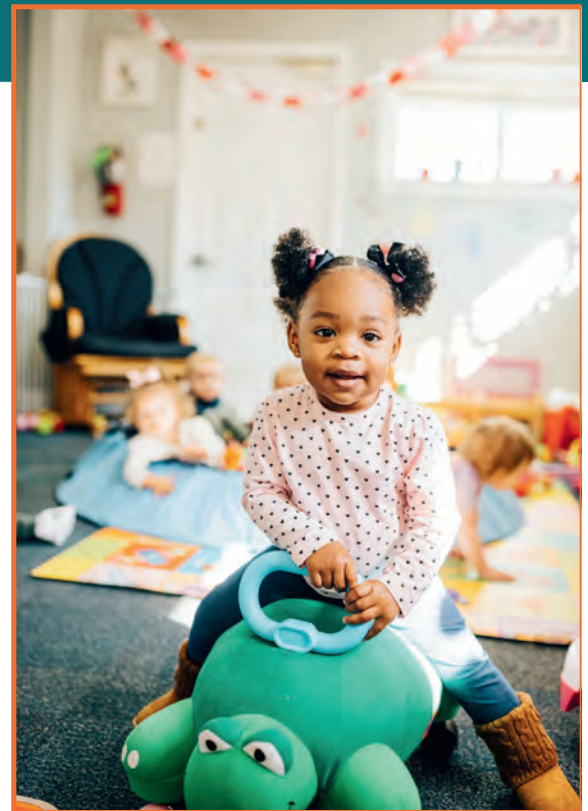
GOAL 3

Increase and maintain quality programs and infrastructure.



GOAL 4

Increase the number of infants and toddlers under 200% of the federal poverty level served in high quality settings by 25%



iPhone Basics For Boomers



*EmpowerTech:
Bridging Generations with
iPhone Mastery*



Instructors

Claudette Lay and Brenda Marinello, retired educators with decades of experience in Louisiana, lead **“Apple iPhone Basics for Boomers®”** in Jefferson Parish. They prioritize creating a comfortable learning environment and encourage practical application of skills. With personalized strategies, they optimize success for each participant.

The iPhone Basics for Boomers program offers hour-long classes led by two instructors for up to 10 participants, focusing on essential iPhone skills. Participants receive notes for reference and follow along with demonstrations on a TV connected to an iPhone. Topics covered include basic calling, texting, photo management, safety measures, and app usage like Maps and Uber.

The program's goal is to empower seniors to embrace modern technology and connect with loved ones. Pre-surveys assess existing skills and interests, while classes are tailored to students' needs and paced accordingly. Post-surveys gather feedback for continuous program improvement. Previous classes have been held at various locations, ensuring accessibility.



Classes

Each session comprises four classes, each class being 1 hour. This format ensures that participants receive information in manageable increments, avoiding overload and facilitating effective learning.



Concepts Acquired

Upon graduation, participants will master essential skills like calling, contacts, photos, messaging, and, and online safety, fostering stronger family connections.



Locations

Classes are conveniently offered on both the West and East Banks, ensuring easy accessibility for all participants.



Class sizes

Limiting each class to a maximum of 10 participants enables instructors to provide personalized attention and promptly respond to individual needs.

Program Sponsors:



JEFFERSON
COMMUNITY
FOUNDATION



Jefferson Community Youth Leadership (JCYL)

Presented by 1st Lake Properties, JCYL is an eight-month leadership program for high school junior and seniors.



The mission of Jefferson Community Youth Leadership (JCYL) is to foster lifelong leadership in Jefferson Parish. Open to high school juniors and seniors from public, private, and parochial schools within the parish, JCYL offers a comprehensive curriculum that includes both an opening and a graduation ceremony. Students gain valuable knowledge on various critical topics and have the unique opportunity to present to the Jefferson Parish Council, enhancing their public speaking and civic engagement skills.



JCYL is provided at no cost to both schools and students, reflecting our commitment to accessible leadership development. The program begins with a dynamic Kick-Off Retreat, designed to spark meaningful discussions and interactions among students from diverse backgrounds. Over the course of the year, participants engage in six monthly sessions, each crafted to challenge and expand their understanding of Jefferson Parish's complexities and their role within the community. Through these experiences, students not only develop their leadership and teamwork abilities but also contribute to the positive growth of Jefferson Parish.



“The quality of a leader is reflected in the standards set for themselves.”



The students met once a month for a series of enriching sessions that extended their learning beyond the traditional classroom environment. These classes covered a range of impactful topics, providing students with a deeper understanding of crucial areas and equipping them with knowledge and skills beneficial for their futures. The topics included:

OCT
18

Healthcare

NOV
15

Education

DEC
6

Economic Development

JAN
17

**Law Enforcement/
Governance**

FEB
21

**Diversity, Equity, and
Inclusion**

MAR
20

**Community
Involvement**



Cafe Hope

Cafe Hope's Emeril Lagasse Foundation Kitchen

Cafe Hope, in partnership with Emeril Lagasse Foundation, unveiled its transformative new Emeril Lagasse Foundation Kitchen on January 25th. Situated at 1 Timberlane Dr. in Gretna, this modern facility equips youth with essential skills for success. Supported by a \$225,000 grant from Emeril Lagasse Foundation, the kitchen not only serves as a culinary hub but also

symbolizes a commitment to Cafe Hope's mission. Despite setbacks from Hurricane Ida, Cafe Hope's resilience shined as it embarked on a \$5.4 million campaign to revitalize its campus, ensuring a brighter future for the community. The Jefferson Community Foundation was proud to fund the capital campaign consultant for the rebuild.





Café Hope serves young individuals aged 16-24 from the Westbank of New Orleans, an area often lacking in opportunities compared to the Eastbank. Many of these youths are not currently involved in education or employment but aspire to secure meaningful jobs, support their families, and participate in their community. Despite facing challenges, they are determined to improve their lives and contribute positively to society.



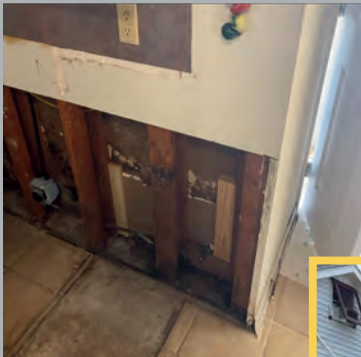
Two Locations

Cafe Hope Coffee Shop
1151 Barataria Blvd, Marrero

Cafe Hope
700 Lapalco Blvd, Gretna

Hurricane Ida

On the anniversary of both Hurricanes Ida and Katrina, the Greater New Orleans Foundation awarded a \$75,000 grant to the New Orleans Area Habitat for Humanity, matched with a \$75,000 grant from the Jefferson Community Foundation in support of Habitat's recovery and rebuilding efforts. The grant supported rebuilding efforts in the town of Jean Lafitte in Jefferson Parish.



“An additional \$225,000 in funding was allocated for Hurricane Ida recovery efforts. In response, JCF established the Jefferson Parish Long Term Recovery Group (LTRG) to coordinate a network of faith-based, nonprofit, governmental, business, and philanthropic organizations involved in the recovery. The LTRG’s aim is to distribute resources equitably to those affected by the disaster, focusing on the “3 Ms” of “Money, Manpower, and Materials.”

To effectively manage resource allocation and operate the Roundtable, the LTRG also relied on two additional “Ms”: Management and Marketing. These functions were crucial for raising awareness about the LTRG’s mission, and for helping members secure further funding to support long- term recovery for our residents. The funding to LTRG partners was made possible by grants from the **Center for Disaster Philanthropy** and the **United Healthcare Foundation**.



LTRG PARTNERS

American Red Cross
Catholic Charities
Convoy of Hope
FEMA

Greater New Orleans Foundation
Hispanic Chamber of Commerce
Institute of Mental Hygiene
Jefferson Council on Aging
Jewish Family Service of GNO
Lutheran Social Services Disaster
Response

Mennonite Disaster Service
New Orleans Area Habitat for Humanity
New Orleans Education League Of The
Construction Industry (NOEL)

LTRG PARTNERS

Rebuilding Together

Salvation Army

Society of St. Vincent de Paul

Second Harvest Food Bank

Team Rubicon

United Way of Southeast Louisiana

Via Link 211

Volunteer Louisiana

Youth Building New Orleans

YMCA of Greater New Orleans



JEFFERSON
PARISH

SAVE THE DATE SAVE THE DATE S

Red 70th & Blue SENIOR EXPO



MARCH 20, 2025



Pontchartrain Center | Kenner, Louisiana



LOUISIANA BLUE  



JEFFERSON
COMMUNITY
FOUNDATION



Jefferson
Parish
State of Louisiana



**JEFFERSON
COMMUNITY
FOUNDATION**



**DONATE
TODAY**

Jefferson Community Foundation (JCF) is the nonprofit, community foundation for Jefferson Parish dedicated to improving the quality of life for residents, visitors and businesses in Jefferson Parish by focusing on the needs of the community and power of philanthropy.

- JCF's core focus areas include senior initiatives, transit, race and equity, education, neighborhood support and revitalization and health and wellness.
- Jefferson Parish has the highest senior population, highest Hispanic population and largest school district in the state of Louisiana.
- JCF is powered by the community for the community. You make a donation, start a fund, create an endowment or leave a legacy, and JCF helps connect that money with the greatest need.
- Donations are used to support programs or projects that will create a positive change and impact the needs of the community that are not satisfied by business or government. Your support makes a lasting impact on the Jefferson Parish community.
- JCF coordinates partnerships and helps donors maximize their charitable goals connecting to community needs in Jefferson Parish.
- Board members work closely in the communities they serve, so they know exactly where the funds will be best utilized.

**JEFFERSON
COMMUNITY
FOUNDATION**

2023 Board of Directors

James Garvey, Chairman

Dr. Shondra Williams, Vice Chairman

John K. Roberts III, Secretary

Lynda Nugent Smith, Treasurer

Philip W. Rebowe, CPA, Past Chairman

Mickal Adler

JoLena Broussard

Oscar Chimal

Stephen Dwyer

Joe Ewell, Jr.

James Hudson

Brian Lade

Louis Lauricella

Patricia LeBlanc

Claudia Shabetai

Henry Shane

Ronnie Slone

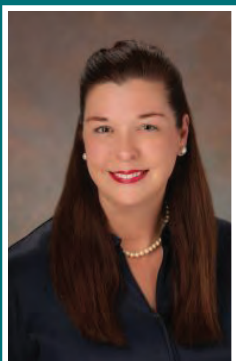
Scott Sternberg

Gordon Wadge

Darryl Ward

Pamela Watson

**Tim Coulon,
Director Emeritus**



Christine Briede,
Executive Director

Jefferson Community Foundation

Contact Us

Connect@jeffersoncommunity.org
504-264-1237

Follow Us

